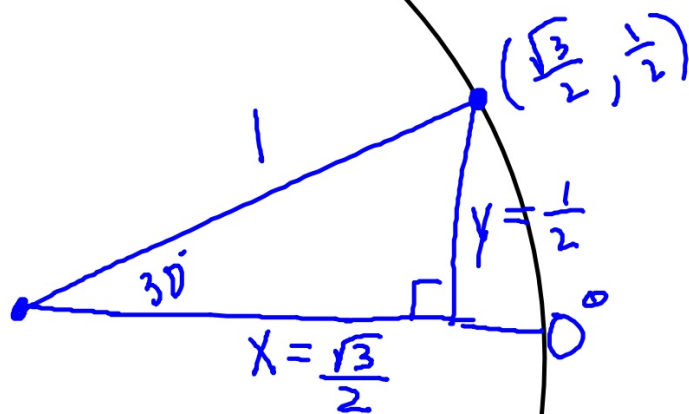
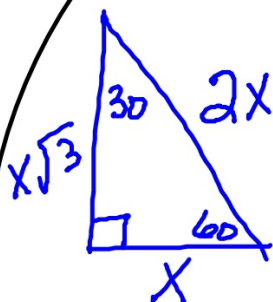


9.3: Evaluating trigonometric functions (unit circle)

Unit circle: a circle with radius equal to 1

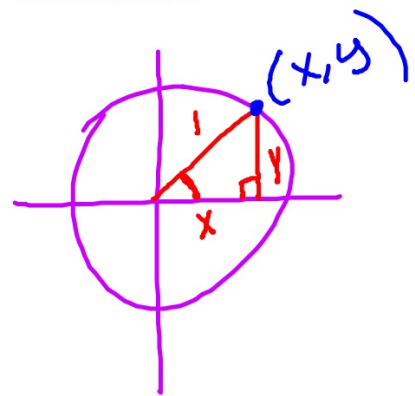
1) 30°
 $30^\circ = \frac{\pi}{6}$



For each coordinate of the unit circle, because of SOH CAH TOA, the

x-coordinate corresponds to cosine

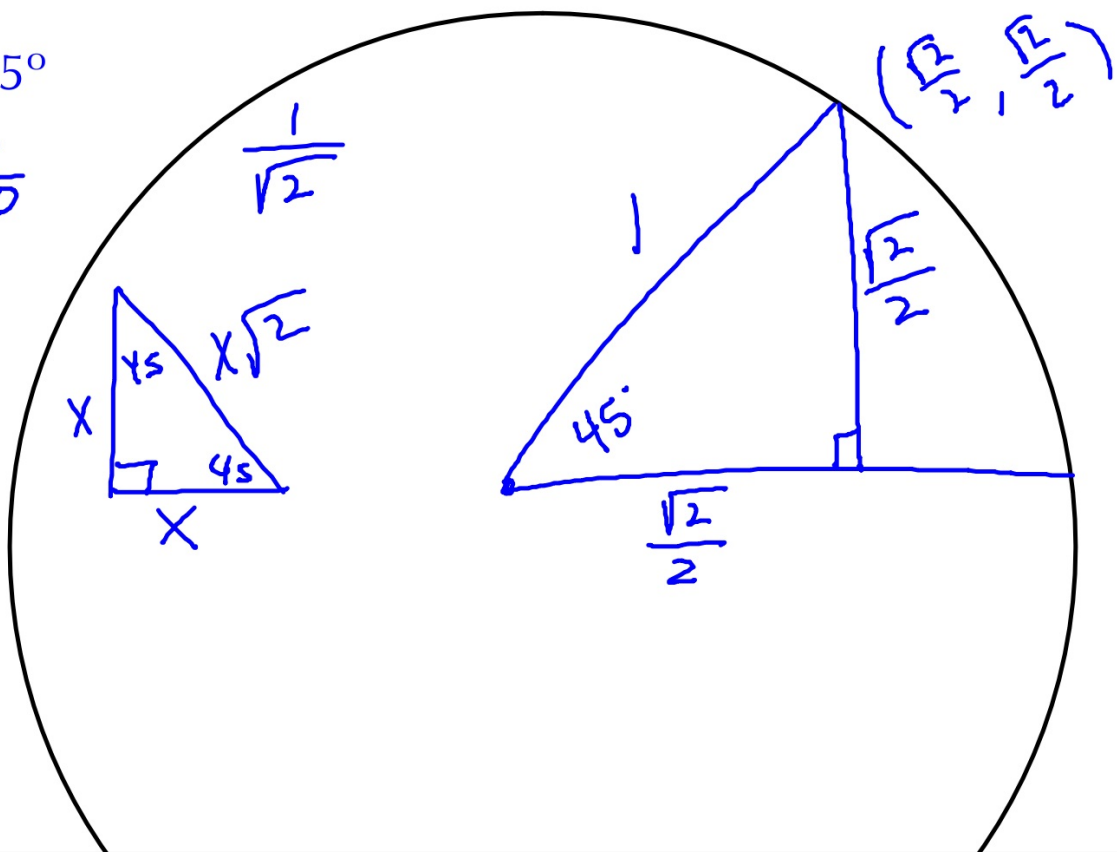
y-coordinate corresponds to sine



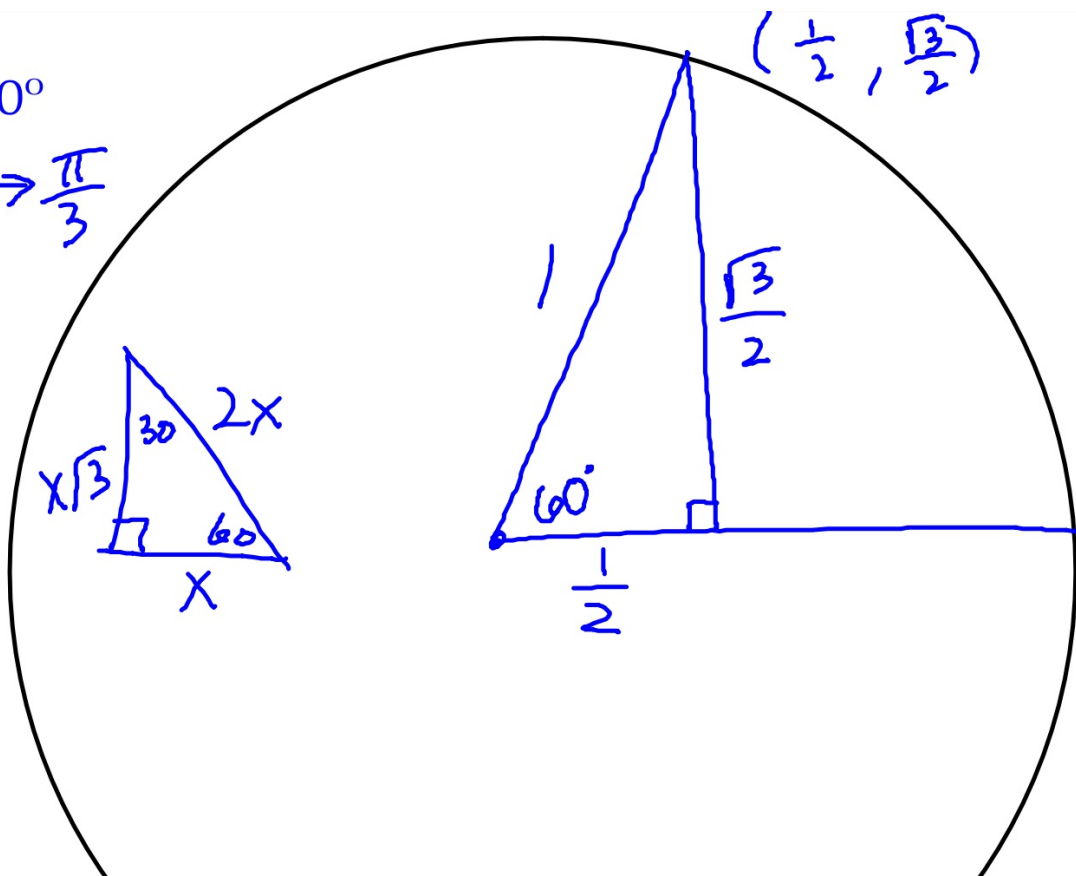
2) 45°

$$45^\circ \cdot \frac{\pi}{180}$$

$$\frac{\pi}{4}$$



3) 60°
 $60^\circ \rightarrow \frac{\pi}{3}$



Quadrantals: Angles whose terminal side is on the x-axis or y-axis

